

# Year 10 Programme



SAMUEL  
MARSDEN  
COLLEGIATE SCHOOL



Learning at Year 10 gives you opportunities to strengthen your talents, explore new challenges and grow as independent thinkers and learners. You are able to develop areas of strong personal interest while exploring new avenues. Several subjects incorporate individual and project-based learning which strengthen your problem-solving and critical thinking skills. Remaining open to learning across the curriculum will build your skills as an adaptable 21st century learner.

We challenge you to be the best you can be.

Differentiated programmes aim to challenge and meet the needs of students of all ability levels.

Technology is integral to everyday learning and it is important that you use your personal device in responsible and powerful ways to further your understanding and challenge your thinking.

Along with your core subjects, you will choose from a range of options. Some are full-year and some are half-year options. The number you choose will depend on your preferred mix.

Our Te Kācano programme offers unique growth and leadership opportunities for Year 10 students and ensures you are ready to make the transition to the Senior School.

Marsden *Inspiring Girls*

Year 10 students participate in several special programmes during the year which develop excellence, creativity, resilience and a commitment to service. These include education outside the classroom and the Bronze Duke of Edinburgh Hillary Award.

In Year 10 we prepare all our students for the NCEA Numeracy and Literacy co-requisites. These national assessments are designed to ensure that all children have the literacy and numeracy skills they need to access the

curriculum in senior secondary, and to succeed in life beyond school. Assessment tasks are pitched at Level 4 of the New Zealand Curriculum, which is appropriate for Year 10 students.

The following tables illustrate some of the ways your options may combine. There are many other possible combinations. Please note Te Reo Māori and Perspectives of Aotearoa are compulsory.

### Sample Option Combination

1st semester	2nd semester
Te Reo Māori / Perspectives of Aotearoa (compulsory)	Fashion Designer
Chinese	
French	
OR	
Food Product Design	Creative Digital Designer
Social Action Textiles	Pushing Paint, Pulling Prints
Te Reo Māori / Perspectives of Aotearoa (compulsory)	Te Reo Māori (option)

## Core Subjects

### English

*“The English language is ... so clear and bright that you can search out the darkest places with it.”*

KATHERINE MANSFIELD

In English we inspire a life-time love of literature and language. Because success in English is fundamental to success across the curriculum, we emphasise the pleasure that comes through a knowledge and understanding of the English language and its literature.

English focuses on making and creating meaning through a variety of enjoyable contexts and studying a range of written, visual and oral texts. You will be involved in activities such as Shakespeare performances, debating, library sessions and writing competitions.

We continue to develop your critical thinking skills in relation to studied texts as well as language work. English has an integrated approach to learning through different media, drama, role play and technology.

### Mathematics

*“The book of nature is written in the language of Mathematics.”*

GALILEO

Year 10 offers many opportunities to expand your thinking skills through collaborative problem-solving activities. You will tackle a variety of mathematical problems to develop your logic and reasoning skills through flipped learning, collaborative group work, investigations, projects and online skill practice.

This course is not only about the acquisition of concepts and skills but also the application of these to practical problems. You can be creative in the way you apply your knowledge and you are encouraged to think critically about your methods and approaches. You will have the opportunity to enter national competitions, such as ICAS and the Australian Mathematics Competition.

Our aim is to develop confident and independent mathematicians who enjoy problem-solving. Those who thrive on mathematical challenges have the opportunity to engage in invigorating extension work and there are strong levels of support for those who find mathematics more difficult. All Year 10 students begin working towards the achievement of the NCEA numeracy credits. Our top performing Year 10 students are invited to complete NCEA Level 1 Mathematics. Entry into this programme is by invitation.





## Science

“Basically, I have been compelled by curiosity.”

MARY LEAKEY

Many of the major challenges and opportunities that confront our world need to be approached from a scientific perspective. Through the sciences, you will develop an understanding of the world built on current scientific theories and use their scientific knowledge for problem solving, to gain an understanding of its relevance in your own lives. During the year, you will undertake several independent investigations, including an innovative task on New Zealand’s biodiversity, linking the methodical and creative aspects of both Science and Art.

You will choose a field of interest to develop personal challenge investigations over the year. There are also opportunities for creativity and research. You will plan and undertake an individual action “to make a difference” during your investigations into sustainability.

In Year 10, motivated and interested students may begin preparation for the Brain Bee, a competition in neurosciences open to Year 11 students.

## Social Sciences – Geography, History, Business Studies and Classical Studies

“The calling of the humanities is to make us truly human in the best sense of the word.”

JIRWIN MILLER

In Year 10, classes are organised into the strands of: Business Studies, Geography, History and Classical Studies. In addition to providing a sound base for further study, these subjects explore the way in which societies work and how you can participate and take action as informed and responsible citizens. In the Social Sciences, you are encouraged to think logically, critically and creatively in order to discover and implement strategies for positive change and sustainability. We teach you to read widely, research effectively and write competently. In Business Studies all students participate in the nationwide Like a Boss programme where you will have the opportunity to build your own business with just the provided \$20 in your pocket. In Social Sciences you develop 21st century skills – curiosity, creativity, communication, design thinking, global competence, financial literacy and entrepreneurship.

## Health and Physical Education

Learning in Health Education and Physical Education is based on the concepts of Hauora/Wellbeing. Students explore the importance of attitudes and values that promote healthy living.

Practical learning includes activities such as: athletics, touch rugby, volleyball, netball, badminton, basketball, dance and kī-o-rahi. We encourage you to learn new skills and strategies, extend your knowledge and develop movement concepts in a variety of activities. In class you will discuss how to manage relationships and demonstrate tolerance. Topics include body image, sexuality, drugs, alcohol and mental health. You will have the opportunity to fulfil some of the requirements for the Hillary Award (Bronze).

## Te Reo Māori (1st half-year compulsory course)

*Ko taku reo taku ohooho, ko taku reo taku mapihi mauria.*

*My language is my awakening, my language is the window to my soul.*

Te Reo Māori is our indigenous language. As part of our commitment to growing culturally competent young New Zealanders, with an understanding of our place in the world, all students are given a basic introduction to Te Reo Māori (Māori language) and protocols during the first half of the year. The insights and experiences that you gain will enrich

and broaden your understandings of the uniqueness and complexity of Te Ao Māori. There is an option for you to continue your study in Te Reo Māori in the second half of the year, if you wish.

## Perspectives of Aotearoa (half-year course)

This half-year course, of one lesson per week, sits alongside Te Reo Māori. Learning aims to build an understanding of cultural practice and its significance in New Zealand society. Students will develop a personal inquiry into an aspect of their own choosing.


Possible topics might be celestial navigation, whakapapa, Māori medicine, art or literature. They will present their findings in a creative project that may take any form, such as digital, artistic, written, construction or performance-based. Along with enhancing their cultural understanding, the Perspectives of Aotearoa course will build essential skills in critical thinking, creativity, problem-solving and innovation.

## Religious Education: World Religions

Marsden is an Anglican school whose wellbeing and organisation is under the care of the Anglican Diocese of Wellington. Although you are not required to be a member of this, or any church, Religious Education is at the core of the school's character. In Year 10 the focus is on spirituality within Christianity and world religions. On a full-day bus tour of Wellington, you will visit places of worship for different religions, such as the Masjid (mosque in Kilbirnie) and Hindu temple.

---

## Option Subjects

 *To speak a foreign language is to have another soul."*

CHARLEMAGNE

### Languages

Communicating with people from other cultures is an important skill in this age of global mobility. Learning a language also helps you analyse and understand your own culture and language. Marsden offers three language options. You are welcome to study one or more of these.

Maybe you already have prior learning of a language. We can help you work out the right level of study for you.

If you wish to pick up a language in Year 10 that you have not studied in Year 9, we can provide language resources over the summer for independent learning. An entrance test in Term 1 will determine your readiness for Year 10 language study.

### CHINESE (full-year option)

You are invited to actively use spoken Chinese and encouraged to listen to and engage with the language as much as possible. You are introduced to more Chinese characters to aid your reading comprehension and written work. You will have the opportunity to participate in the New Zealand Chinese Speech Competition.

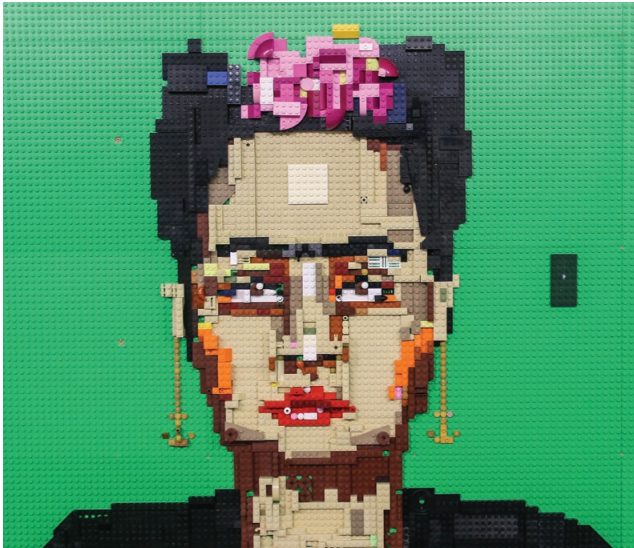
### FRENCH (full-year option)

Students study grammatical constructions in greater depth. You will further develop your reading, writing, listening and speaking skills in preparation for Level 1 NCEA. Cultural studies are integrated into the course.

### TE REO MĀORI (second-half-year course)

You have the option of continuing your Te reo Māori course into the second half of the year. You will build on your speaking, listening and writing skills in preparation for taking Te reo Māori at the next level if you wish to pursue it further.

Lego artwork created by Jillian Allen.



## Art

*“For art to be relevant, artists must address the social and spiritual issues of our time.”*

SUZI GABLIK

Art celebrates multiple perspectives, teaching you there are many ways to see and interpret the world. Across both semesters you will gain confidence and essential skills in preparation for senior studies in Painting, Design and Photography.

### **PUSHING PAINT, PULLING PRINTS (half-year option)**

You will develop a body of art work based around a social and environmental inquiry, with cross-curricular links to other subject areas, developing skills in a variety of media. You will spend time with the Artist-in-Residence and experience the buzz of preparing for our major exhibition.

### **PIXELS AND SCULPTURE (half-year option)**

You will get to develop your photography and digital design skills as well as creating and exhibiting site specific sculptural installations, constructed in response to a variety of environmental provocations. You will need a camera on your phone with the ability to download and share images to your school gmail account and it is helpful to have a laptop computer able to support Adobe design software.

## Music (full-year option)

*“The true beauty of music is that it connects people.”*

ROY AYERS

Music is an integral part of life at Marsden and there are musical opportunities for all students. Music as an option targets students interested in exploring music as a field of academic study.

Year 10 Music lays the foundations for further academic music in Years 11–13. The four elements of performance, aural and listening, composition and theory of music will be studied and built on as the year progresses. Students are encouraged to extend themselves according to their skill levels and abilities. Because music is a language, students will aim to embed more musical vocabulary and learn to use it in their own creative work. Students are encouraged to extend themselves according to their skill levels and abilities. Those who are ready may achieve some internally assessed NCEA Level 1 Music credits during the year.

## Technology

### **SOCIAL ACTION TEXTILES (half-year option)**

Using the power of sewing, you will address the world's biggest social and sustainability problems. Working individually and in groups you might create a dress for a child in need (for *Dress a Girl Around the World*.) In a production team you might produce a quilt (for The Nest Collective). You will work with sewing action groups based in Wellington, such as St Vinnies Resew and Boomerang Bags. All students will have access to Adobe for \$10 for the year. There are some additional charges for materials.

### **FASHION DESIGNER (half-year option)**

Do you have a unique sense of personal style? Would you like to be more creative? Together we can explore the instincts and skills necessary to turn raw materials into a beautiful finished product. Learn the skills of a fashion designer, create fashion drawings using both a portfolio diary and digital methods. You will be challenged with fun projects which will be modelled at an end-of-year celebration of all things technology. All students will have access to Adobe for \$10 for the year. There are some additional charges for materials.

*“Design is a funny word. Some people think design means how it looks. But of course, if you dig deeper, it's really how it works.”*

STEVE JOBS

### **WEB DESIGN AND ROBOTICS (half-year option)**

Do you like problem-solving? In this course you will learn new concepts, skills and languages while solving fun challenges, applying computational thinking to formulate solutions. You are introduced to the basics of computer coding. This includes hand coding web pages and extending your understanding by creating graphics using HTML and JavaScript code. You will also complete a project using a 3-Dimensional computer environment and programme the robotics using spheres.

### **CREATIVE DIGITAL DESIGN: GAMER (half-year option)**

We will take you through the fundamentals to create your own games and products. Using a project-based approach that involves learning about creating vector graphics,





you will work with Adobe Illustrator and svg coding. You will apply this learning, using technology such as the laser cutter, to create your own individual pieces. You will design your own computer game working through stages from designing, identifying the data requirements, implementation and testing.

### **FOODS FOR LIFE (half-year option)**

Look at how your food choices and eating patterns are influenced by your surroundings and the modern world; learn ways to address these as well as develop health-enhancing attitudes to food and nutrition. You will gain the knowledge and confidence to prepare food safely for yourselves and others, especially for allergies or health related issues. You will work towards the National Certificate in Food and Nutrition applying practical skills and theoretical concepts.

### **FOOD PRODUCT DESIGN (half-year option)**

Food Product Design provides plenty of hands-on food preparation in a collaborative environment. You will learn safe food practices to make a variety of dishes. Once mastered, you will design your own food products, to meet a given brief and then use research and survey tools to determine which is the most marketable product. Your product is trialed and modified as required, before a final evaluation is conducted.

### **LEARNING SUPPORT (half-year or full-year option)**

Classroom learning can be overwhelming and the opportunity to review learning in a small and quiet space can help make sense of the day. The Learning Support class is taught in a small group and is available to students who struggle disproportionately in aspects of their learning, who experience gaps in their knowledge and who have specific learning differences, including dyslexia and processing issues. You learn strategies to improve your reading and writing skills and enhance your comprehension and time management. Our specialist Learning Support teacher will liaise with other teachers to support your learning in other subjects.

## **Special Programmes**

### **DUKE OF EDINBURGH HILLARY AWARD – BRONZE**

This is a year-long programme. You learn about outdoor safety and first aid during lessons, complete a practice tramp during the Year 10 outdoor education week and a qualifying tramp at the end of the year. Other requirements for the award fall within activities you would normally participate in, such as playing in a sports team or learning a skill such as a musical instrument. Completing the Bronze Award during Year 10 allows time for you to work towards the Silver and Gold awards over the next few years. The Gold Award is highly regarded on CVs and is a superb personal achievement.

# Marsden

## *Our Values*

### **Excellence** **Hiranga**

Marsden School has a high-performance environment where everyone aspires to be the best they can be in their academic and co-curricular pursuits.

### **Resilience** **Manahau**

Those who can pick themselves up and keep going have the greatest chance of personal happiness and success. Resilience is the explicit focus of a number of our programmes.

### **Creativity** **Auahatanga**

The ability to think outside the square, to respond to the challenges of today in innovative ways, to find new ways of working, thinking and living is vital to a successful future.

### **Service** **Oha**

It is important for our students to be aware of their place in the local and global community. In keeping with Anglican values and tradition, consideration for others is fostered and delivered through co-curricular programmes.

### **Respectful relationships** **Whanaungatanga**

A sense of belonging is nurtured through shared experiences and working positively together as one Marsden family. This is achieved through forming and forging reciprocally respectful relationships.

---

Samuel Marsden Collegiate School  
Marsden Avenue, Karori, Wellington  
Private Bag 17000  
Karori, Wellington 6147

(04) 476 8707

[marsden.school.nz](http://marsden.school.nz)